

Geography

A-Level

Overview

The aim of the Geography Department is to prepare you to take an active and intelligent interest in the world in which you live. During these times of unprecedented change, geography provides a safe platform to explore global and local issues from climate change and sustainability to the development gap and globalisation. The Geography Department is a highly successful department and is staffed by experienced and enthusiastic subject specialists.

Why Study?

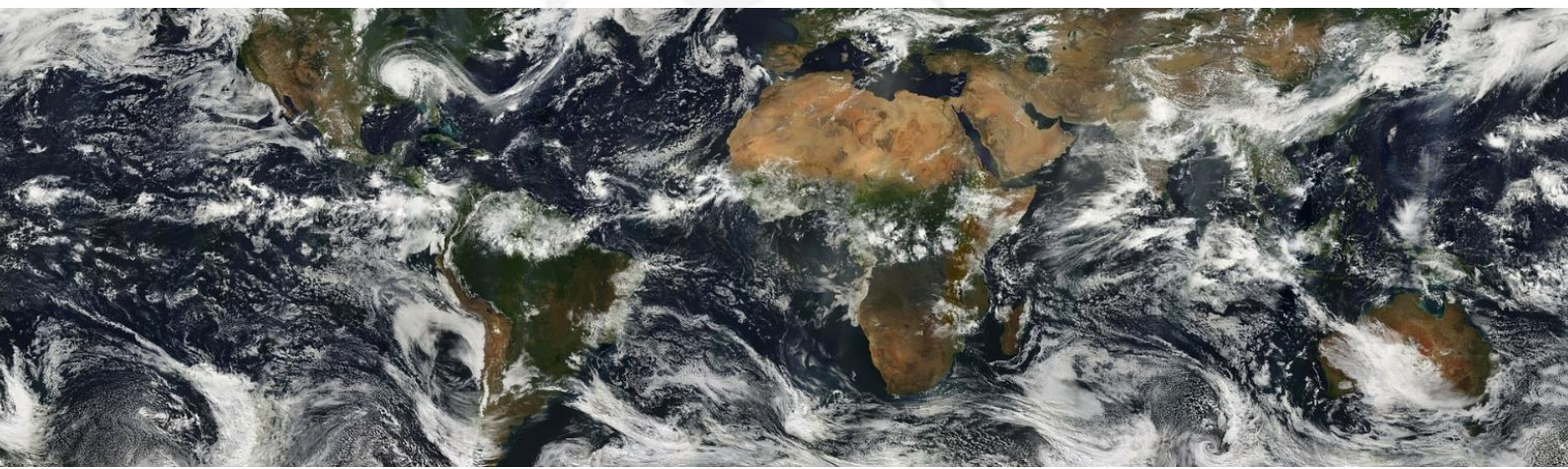
Geography equips students with the ability to analyse and interpret information and make decisions based on a holistic understanding of concepts, models and theories as well as observations of the world around us. It is particularly pertinent today as we face the many challenges of climate change, development, globalisation and sustainability. Knowledge and understanding of these topics is crucial for the decision makers of the future.

Course Overview

At A Level, as a Geographer you will follow the OCR specification, which enables you to develop and extend your study of thematic and place-orientated aspects of the subject.

In Year 12, you will study Coasts and Earth's Life Support Systems in Physical Geography. This includes understanding the carbon and water cycles and our impact upon them. This is vital information in order to equip pupils with the ability to make informed decisions in relation to climate change. In Human Geography we consider the concepts of 'Space' and 'Place' and look at the varying factors that determine how we interact with urban and rural areas. We will also study human rights and the challenges as well as opportunities of migration.

Year 13 focuses on the more holistic study of food supply in Human Geography and Hazards in Physical Geography. These topics are assessed through Paper 3 which aims to test pupils' broader understanding of the subject and the synoptic links between all elements of Geography. Pupils in Year 13 will also undertake an individual investigation which will involve primary data collection and can be based on any part of the A Level specification.





Geography

A-Level

Progression:

Geography is one of the best subjects for employment and a fast growing subject for a career choice. Students have gone on to study subjects such as Geology, Oceanography, Environment and Development, Environmental Science, Geoscience, journalism and Urban Planning. There is also a significant increase in students following careers related to the challenges of combating climate change. These include sustainable energy, geo-engineering, conservation and sustainable low carbon planning.

Head of department: Mark Neenan

Email: mn@queenscollege.org.uk